

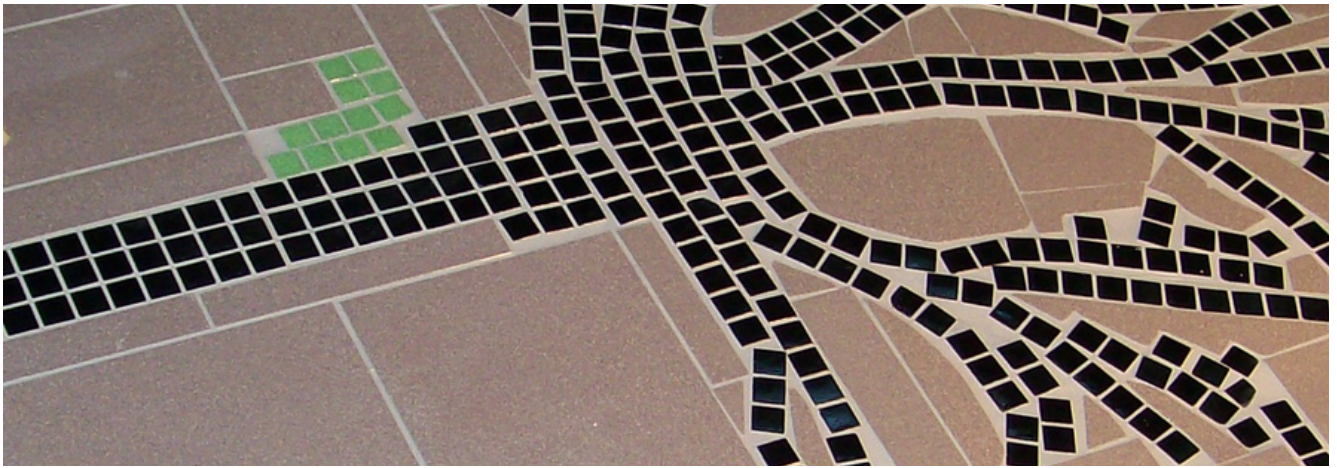
The Flowerdale Flyer



And on a sun-filled Saturday morning,.....a female walks into the Flowerdale Men's Shed.....and is welcomed with smiles, hugs, a strong brew of coffee and some delicious buns - Hot Cross and Boston. Many of you will be familiar with our Community Radio UGFM which broadcasts to Murrindindi. Flowerdale's frequency is FM 98.9. Each Saturday morning between 8am and 10 am, Mike Dalmau hosts Good Morning Murrindindi, a show which travels around communities within our Shire reporting on up-coming events and activities. Flowerdale's segment usually is broadcast at about 9.30. On this pre-Easter Saturday, the Flowerdale Men's Shed is front and centre of the broadcast, and verbally showcases the stunning range of projects on the go. The Men's Shed is a mixed bag of stories and projects....

Story Continues on page 4 and 5





Flowerdale Community House

Building Friendships...

PO BOX: 2008 Hazeldene, 3658
36-42 Silver Creek Road Flowerdale
Phone: 5780 2664
Facebook: Flowerdale Community House
Website: flowerdalecommunityhouse.com.au
Email: admin@fchadmin.com.au

Office Hours

Tuesday - Thursday
9am-3.30pm

The Flowerdale Flyer is a social enterprise initiative of the Flowerdale Community House.

Our staff are fully trained in both First Aid 004 and Mental Health First Aid.

If you would like your article featured in The Flowerdale Flyer, please email your article to admin@fchadmin.com.au

Articles are due on the 20th of each month

Coordinator: Rebekah Grant
coordinator@fchadmin.com.au

Advertising Rates

Community group/ Not-for-profit Organisation Local (Glenburn/ Strath Creek/ Flowerdale Area) rates:

1/2 page: Free

In addition 1/2 page: \$30 increments
full page: \$50

Commercial Rates:

Full Page: \$100

1/2 Page: \$50

1/4: \$30

1/8 (business card): \$15

Not-for-profit organisation from non-local area: negotiable, contact Rebekah.

Guidelines

- All articles are subject to publisher and committee approval.
- Please submit in a Word document.
- Advertisement payment must be in process.
- Articles published are neither in favour or not in favour of politics
- All articles must be submitted by deadline.

COORDINATOR'S

Column

OPEN DAY We have Open Day coming up Sunday 8th of October with the official opening of the Flowerdale Community Garden. This is going to be an excellent day to meet the Voluntary Garden Committee, join free gardening workshops and grab some freebies! Plus and the usual fun of our annual Open Day where the community comes together and showcases their groups, products and services. Make sure you put this one in your diary. Its not to be missed.

If you are a local business, group, hobbyist, or service and you would like a FREE table on the day please give us a call at the house to book a table inside or outside.

If you are a food vendor we would love to have you at the house on the day too!

MEMBERSHIP

Community House Membership comes due on June 30 and as always we want to thank those who choose to become a member of the house. The \$10 per year fee helps go towards those invisible cost to name just a few.

Of course even if your not a member you are very welcome to use all the services, programs and activities we offer at the house.

You can grab a Membership form from the house for new members or current members can pay via bank transfer or with cash at the house.

OP SHOP

Did you know that the Flowerdale op shop funds Youth group, firewood, playgroup and the fuel vouchers to our community as well as many more worthy causes.

This is not possible without amazing volunteers to running and working at the Op shop each week. Currently the OP Shop **opens Friday Saturday and Sundays**. If your interested in helping out any of these days please contact Sally or pop into the community house Tuesday - Thursday 9.30- 3.30.

FOOD DONATIONS

As it is now June and we have seen an increase in need across the community we will starting our yearly collection for Christmas Hampers. If you can offer any long life milk, canned vegetables, canned fruits, pastas, jams, or other long life foods we would love your donation. Last year many different sources assisted in making 59 hampers. the value of each hamper is approx. \$150 each so you can imagine the need for donations is extremely important.

OPEN DAY

Featuring
The Official
Opening
of the

**FLOWERDALE
COMMUNITY GARDEN**

SUNDAY 8TH OCTOBER 10-2PM

**FREE KIDS ACTIVITIES
GARDEN WORKSHOPS
SAUSAGE SIZZLE!
MARKET STALLS
DEMONSTRATIONS
and more..**

**36- 42 SILVER CREEK RD
FLOWERDALE PH: 58702664**

Front page continued.....Rodney is making toys for his little great-nephew....a miniature rocking horse, complete with mane and sound effects, a rocker in the shape of a dog. That's one kid who is going to be wearing a smile for a long time. Moving around the shed, we find David bending metal bars to precise angles....he is building a theatre set piece for a play - The Little Shop of Horrors - a production by the school he works at. Greg is cutting and polishing flat surface stones and turning them into beautiful framed mosaics. Gary has just finished making a Potting Station for the new garden at the Community House and it is loaded and securely tied on the trailer, ready for delivery. The Potting Station is a true work of art. Almost completely made from recycled and salvaged materials, this majestic structure is a gardener's dream and is now the newest asset of the Gardening Group at FCH. Don, the self-proclaimed master of unfinished and ongoing projects is busy this morning. Today he is working on repurposing an old PABX machine.

Outside, Fred takes us to the vege garden, a huge fenced and roofed expanse with a central path separating large garden plots. I experience immediate garden and culinary envy at the rich bounty popping out from the soil - tomatoes well over 2 metres tall, pumpkins, potatoes, corn, herbs of every description, strawberries....oh the delights go on and on. Fred is only too happy to point out his rare tomato plant. Fred and a few of the green fingered blokes have resurrected the garden. The brainchild of the late Peter Auty, and erected after the 2009 fires, it sadly fell into disuse after Pete's passing in 2013. Walking around, my memories float to Pete and I reckon he would be delighted that these blokes have fulfilled his dreams.

The Men's Shed has a rich history of supporting local community groups and individuals. Their sensational and very creative go-karts are still treasured by the kids at Flowerdale Primary School. The blokes are very hands on during recent working bees at the Community House and have made shelving for our Op Shop.

This is only a small snapshot of the wonderful blokes community which is the Flowerdale Men's Shed. Their long history of supporting each other, as well as groups and individuals, make them a shining beacon within our small community. A huge shout out to Mike Dalmau and to Radio UGFM for giving us a 30 minute segment to promote the Shed. It was a privilege to be able to showcase their works, their camaraderie, their friendliness and their positive and welcoming attitude. The Men's Shed is located on Spring Valley Road right beside the Rec Reserve, Tennis Courts and Cricket Oval. It is open each Wednesday from about 9.30 to 3pm, and on Saturday mornings from about 9am. Look for the big green Shed and go in, have a cuppa and meet some of the finest blokes in Flowerdale. Annie Robertson





Left: **Happy Snaps** from **CONNECT** Group last Saturday Night.

The newest group to the house has gone from strength to strength since it started last year.

This group is supported by Pride Australia and the Flowerdale Community House and is growing to be a wonderful monthly social group for people from all over the Shire and further a field. Join them **1st Friday of each month** . Call **Jeanette on 0408172935** for meeting location.



Flowerdale Community House invites you to

CONNECT

1st Friday Night of the Month 7-9 pm

Connect is a monthly discussion/social and support group for adults 18+ who identify as LGBTIQ+. Light refreshments provided.

36-42 Silver Creek Rd Flowerdale. Please RSVP call 5780 2664.

Financial hardship

Difficulty making ends meet?

Many people on low incomes, including Centrelink payments, find it very difficult to make ends meet. If you or your family is in crisis, many of our centres can provide emergency relief with food, food vouchers, travel cards, petrol vouchers, assistance with bills, rent and medicines.

In addition, our centres can provide information about other supports, advocacy to arrange payment plans and other outcomes, budgeting assistance and financial and personal counselling. (What is Financial Counselling: financial counsellors are qualified professionals who provide information, advice and advocacy to people in financial difficulty). For more information on these supports search for your closest centre.

Other financial assistance

- **National Debt Helpline – 1800 007 007. This service helps people tackle their debt problems. Professional financial counsellors offer free, independent and confidential services. The service operates Mon to Fri from 9.30am to 4.30pm. Or visit**
- **No Interest Loan Scheme (NILS) provide individuals and families on low incomes with access to loans available for essential goods and services such as fridges, washing machines, car repairs and medical procedures for up to \$1,500. Repayments are set at an affordable amount over 12 to 18 months. For more information visit the [NILS website](#) or speak with one of our centres, as many of them provide this service or know who does locally. [Click here](#) to find a centre near you.**
- **Good Money For safe and affordable financial supports visit – Good Money, including:**
 - **Step-up Loans - Low interest loans of between \$800 – \$3,000 with no fees and affordable repayment periods**
 - **Affordable Insurance - Simple car and contents insurance with flexible payment options.**
- **Concessions and benefits A range of concessions are available to all Victorians who are on low incomes or experiencing hardship and need help meeting the cost of living. For more information about these concessions and benefits visit**
-
- **Utility Bills Check out our [Energy Relief Information sheet](#) with information on advice and support with overdue utility bills or [click here](#) to find a centre near you who may be able to assist.**
- **Non Mains Utility Relief Grants are available for water, gas, firewood and other non mains forms of power and heating.**
- **Foodbank available at Flowerdale Community House, Whittlesea Community House, Yea Community House and Kinglake Neighbourhood House.**
-
- **Home visitation is the core work of the St Vincent de Paul Society. For assistance call [1800 305 330](#) (Victoria only) between the hours of 10am and 3pm Monday-Friday.**

This process will involve being a supportive listener and may also include providing food or food vouchers, clothing, furniture, budget support, assistance with utility bills or back to school costs, information and advocacy. Victoria's conferences meet on a regular basis and work closely with St Vincent de Paul Society's [Vinnies Shops](#) to provide assistance.

COMMUNITY GARDEN



A huge shout out to the amazing volunteers who continued with the garden plans in my absence over May. **Don Love, Rose Elsom and Jackie Hare** as well as **Jill Vizec, Joe Law and Bruce Hinkley** kept working on the developing garden to keep us on track

I also wanted to thank **Beth Williams** who runs the Be Well in the Ranges and Music and Mindfulness program.

Beth bought in and planted some beautiful brocolli, cabbages, silver beet, cauliflower and other greens for the community garden.

These will grow nicely over winter for lots of yummy healthy meals for many.

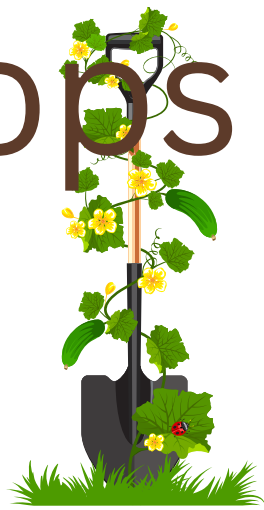
Thank you so much for your generosity!

Our next Working Bee will be over 2 days to make our ferro cement seat. if you want to join us check the facebook page for updates or call 57802664.

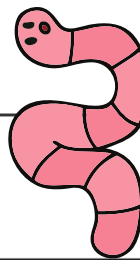


Garden Workshops

in 2023



DATE SATURDAYS	TIME	SUBJECT MATTER	Hands on/ Theory/Demonstration
4/2/23	11am-12.30 pm	Weed Id and Management	Theory ✓
18/2/23	11am-12.30 pm	Pest Id and management	Theory ✓
4/3/23	11am-12.30 pm	How to be greener in the garden (theory)	Theory ✓
18/3/23	11am-12.30 pm	Plants and their effect on Humans and Animals	Theory ✓
1/4/23	11am-12.30 pm	Seed harvesting, storage and sowing	Hands on and Theory ✓
15/4/23	11am-12.30 pm	Pruning	Theory ✓
6/5/23	11am-12.30 pm	Crop Rotation and Companion Planning	Hands on and Theory ✓
20/5/23	11am-12.30 pm	Fruit Tree Pruning and Care	Theory/ Demonstration ✓
3/6/23	11am-12.30 pm	Native Gardens	Theory ✓
17/6/23	11am-12.30 pm	Planting for Wildlife	Theory





2023 Winter Warmer Social Tennis

Our local Night Competition is in hibernation for the winter months, but next monthly club social play is on...

Sunday 11th June. 2 pm start

Mark the date in your diary and come and join us to shake off some of the winter chill with a bit of fun on the courts. Members and non-members welcome. All levels of experience catered for. Some equipment available. Gold coin donation welcome. Tea and coffee provided.

Courts at Spring Valley Recreation Reserve, 748 Spring Valley Road, Flowerdale.

More info: flowerdaletennis@bigpond.com or <https://play.tennis.com.au/flowerdaletennisclub>



**We have vacancies on our Committee of Management.
If you're community minded, want to make a difference and have
some time on your hands, we would love to hear from you.
Come into the house or email secretary@fchadmin.com.au**

Join Gay Chatfeild again at the house to learn the Melon Method of Basket weaving. This workshop is the second in a series of workshops where you can learn many methods, and skills of basket weaving. Whether for the creativity, the mindfulness or the sustainability skill you will love these classes.



Basket Weaving Workshop #2

WHEN: 1pm-4pm Sat 24th
June @ FCH

COST: \$40 per person or \$30
concession
All materials provided.
Book on 5780 2664



Social Club Events

The Flowerdale Social Club have plans for a few upcoming outings if you want to get involved or express your interest please contact the house on 57802664.

September Date TBD: **Melbourne Show After Dark**

October 22nd: **Seymour Cup**

End of Year Date TBD: **Moulin Rouge!**

Youth Group July



Movies 10+

When : 3rd July

Where: Heidelberg

Cost: 22per person plus lunch

Meeting at Flowerdale Community House 9.30am

Please bring Hats. Drink bottle, lunch money snacks.

36-42 Silver Creek Road, Flowerdale

Limited Places Available

Call to book 0493637096 or 5780 2664



Bounce 10+

When: 4th July

Where: Heidelberg

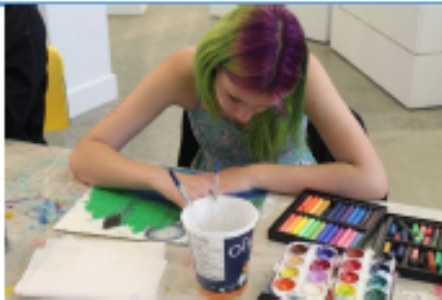
Cost: \$22

Meeting at house 9.30am

Please bring Hats. Drink bottle, lunch money snacks.

36-42 Silver Creek Road Flowerdale

Call to book 0493637096 or 5780 2664



Art Drop at FCH 11.30-3pm

When: 5th July

Where: Flowerdale Community House Partnering with Murrindindi Youth Services

Cost : FREE

Please bring Hats. Drink bottle, and snacks. Lunch will be provided.

36-42 Silver Creek Road, Flowerdale

Call to book 0493637096 or 5780 2664



Roller skating 10+

When : 6th July

Where: Skaterz Eltham

Cost \$18 each

Meeting at Flowerdale Community House 10am

36-42 Silver Creek Road, Flowerdale

Limited Places Available

Call to book 0493637096 or 5780 2664

Youth Group July



Volo Park 10+

When: 7th July

Where: Campbellfield

Cost : \$16 per person plus \$5 for scooter hire if needed

Bring your helmet or \$5 to hire one

Please bring: Hats. Drink bottle, lunch money snacks.

Meeting at Flowerdale Community House 9.30am

36-42 Silver Creek Road, Flowerdale

Call to book 0493637096 or 5780 2664

Flowerdale CFA



Congratulations to Flowerdale Fire Brigade members who were honoured with the National Emergency Services Medal for their contributions during the 2019/2020 Black Summer Fires.

Members who received these honours:

Brian Makin, Captain

Ian Charles, 1st Lieutenant

Gabby Denke, 2nd Lieutenant

Glen Woods, Ex-captain

Steve Brennan, Firefighter

Chris Hawley, Comms officer

Krysia Hawley, Firefighter

Well done to our brigade and all other local brigades whose members also received this honour.

(More photos to come).



Flowerdale CFA



As the cold weather sets in across the state and Victorians switch on their heaters to combat the chill, firefighters are urging people to be aware of the fire risks inside their home.

Data from Fire Rescue Victoria (FRV) and Country Fire Authority (CFA) reveals Autumn and Winter are the highest risk periods for residential fires in Victoria, due in part to the increased use of home heating.

CFA Acting Chief Officer Garry Cook said home heating includes open fires, wood heaters, fixed electrical or gas-powered appliances, and portable electrical, gas, or kerosene heaters.

“More than 70 per cent of fatal house fires start in bedrooms or lounge rooms,” said A/CO Cook.

“Many of these fires are found to be caused by heating systems, appliances, and equipment.

“Remember to never leave portable heaters and fireplaces unattended and turn off heaters before leaving the room.

“Ensure fireplace embers are extinguished before leaving your house or going to bed.

“Ideally, gas heaters should be professionally serviced every two years.”

On average, Victoria’s fire services respond to more than 3,000 house fires across the state each year, and many could be prevented by taking simple precautions.

Fire Rescue Victoria Deputy Commissioner Michelle Young said while the dangers of fire are very real, there is a lot you can do to protect yourself, your family and your home.

“Poorly maintained gas fires can cause deadly carbon monoxide poisoning and we have seen tragic consequences of this in the past.”

“There should be no greater reason to have your gas heater inspected and serviced than to ensure the safety of loved ones,” said Deputy Commissioner Young.

“Another dangerous, yet common mistake people make is drying clothes too close to heaters and fireplaces. Clothes should be kept at least one metre from the heat source.

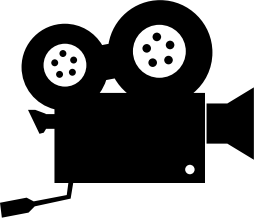
“Every household should consider their fire safety practices and work to reduce the potential risks around their home, particularly when winter hits.”

When it comes to home heating, FRV and CFA recommends:

- **Home heating, including flues and chimneys, are regularly cleaned and serviced by a certified technician.**
- **All heating devices are switched off or extinguished before leaving home or going to sleep.**
- **Drying clothes and other items must be kept at least one metre away from all heating.**
- **Children must be supervised near all types of heating. Maintain a safe distance between children and heating.**
- **For portable heating appliances choose models that have automatic safety switches that turn the heater off if tipped over.**
- **Keep portable electric heaters away from wet areas to avoid the possibility of electric shock.**
- **Brick chimneys and gas heaters should be checked before winter to prevent fires and carbon monoxide poisoning.**
- **FRV and CFA recommend smoke alarms should be considered “A Bedroom Essential” and recommend they are installed in every living area and bedroom.**

Source

<https://news.cfa.vic.gov.au/news/winter-chill-brings-increased-home-fire-risk#:~:text=All%20heating%20devices%20are%20switched,distance%20between%20children%20and%20heating.>



OFF BEAT COMEDY AT FILM SOCIETY



On **Friday 23rd June at 7.00 p.m.** at the Yea Shire Chambers , Murrindindi Film Society will present Paul Cox's 1982 comedy "Lonely Hearts". **Doors open at 6.45 p.m.**

Described as a "tender comedy about finding valuable human connection." Peter (played by Norman Kaye) , a rather eccentric piano tuner nearing fifty meets Patricia (Wendy Hughes), a shy bank clerk of thirty through a dating agency.

When the odd couple embark on a tentative relationship, things start badly, with their second date involving a trip to a geriatric game of bingo. However, their friendship blossoms during rehearsals for an amateur theatre production.

Cox co-wrote the script with comedian John Clarke who was responsible for most of the humour. The supporting cast includes Jon Finlayson, Julia Blake and Chris Hayward.

The film was well reviewed here and overseas, establishing Cox's reputation as a director. It won Best Film at the AFI awards that year.

It is hoped that as many members as possible will be able to attend this gentle comedy which has deeply thoughtful undercurrents. First time guests and prospective members will be welcomed free of charge.

All enquiries to **Jill Dwyer, Secretary, on 57972480 or jill.dwyer@bigpond.com.**





Putting power back in your hands

Get \$250 in your pocket by visiting the Victorian Energy Compare website.

From 24 March, energy bill payers can claim \$250 even if they've claimed the Power Saving Bonus before.

Only one payment is available per household, per round.

We're bringing back the SEC to help drive down power bills.

Visit compare.energy.vic.gov.au
Call 1800 000 832



For assistance in languages other than English, contact Translating and Interpreting Services (TIS) on 131 450.



COUNCIL MEETING CATERING - EXPRESSIONS OF INTEREST

Council is inviting Expressions of Interest (EOIs) from registered food businesses interested in providing catering services for Council meetings for the 2023/24 financial year.

We primarily hold Council meetings in two locations, Alexandra and Yea. We are seeking EOIs from businesses that could supply either one of these locations, or both locations.

To submit your EOI, please visit Council's website at murrindindi.vic.gov.au/businessopportunities

On our website, you'll find more information on the catering requirements, EOI evaluation criteria and a copy of our Expression of Interest form, which you'll need to download and complete, before emailing to governance@murrindindi.vic.gov.au

Council will provide details of meals required to the approved suppliers each week and invoices will be paid on a periodic basis.

EOIs close on 23 June 2023. For more information, please give us a call on 5772 0333.

VOLUNTEER HUB NOW LIVE

To help community groups and organisations recruit more volunteers, Council launched an online 'Volunteer Hub' during National Volunteer Week.

The purpose of the Volunteer Hub is to promote volunteering and increase volunteering opportunities for organisations and individuals in Murrindindi Shire.

There are hundreds of community groups in Murrindindi Shire, all contributing to the richness of community life in a variety of ways. These organisations rely on volunteer support and membership to remain viable.

If you are an individual looking for a way to give back to the community, check out the Volunteer Hub and consider getting involved.

If you're a member of a volunteer organisation not yet listed on the Volunteer Hub, complete the online form at theloop.murrindindi.vic.gov.au/volunteer or give us a call on 5772 0333.



HAVE YOUR SAY ON COUNCIL'S PLAN FOR NET-ZERO EMISSIONS BY 2035

Demonstrating its commitment to fighting climate change, Council has developed a draft Climate Change Action Plan: Towards 2035, which will act as a roadmap to help Council and the community work towards net-zero emissions by 2035.

The Plan supports Council's formal Climate Change Pledge and Policy, which were developed with input and ideas gathered from our community last year, and outlines specific actions for the next three years that Council will take to reduce emissions and support climate change adaptation.

Council is now calling on residents, business owners and landholders to review the Plan, provide feedback and vote for your choice of actions that Council can take to support you.

By providing your feedback, you will also go in the running to win one of two \$100 FoodWorks Supermarket vouchers. Feedback must be received by Sunday 25 June 2023.

To read the Plan, and for more information on how you can get involved and join the conversation, visit theloop.murrindindi.vic.gov.au/climateaction

You can also get information from our Library and Customer Service Centers in Alexandra, Yea and Kinglake, or the Mobile Library, or give Council a call on 5772 0333.

STAY INFORMED

To stay up to date with the latest Council news, visit murrindindi.vic.gov.au/news or follow us on Facebook.

GET IN TOUCH

customer@murrindindi.vic.gov.au
murrindindi.vic.gov.au/request
5772 0333

Whittlesea Community House

92A Church St, Whittlesea ph 97163361



Fix it Friday

Get out of trouble, speak
to an expert and sleep
better at night

A one stop shop for solving problems

Get a real coffee and speak to:

Whittlesea Community Connections Social Worker, My Aged Care,
Whittlesea Community Legal Service, Police - Stat Decs and crime reporting
Lift program for Mental Health, Centrelink, Gamblers Help
Financial Counselling, Merri Health Victims Assistance
NDIS with Brotherhood of St Laurence, No Interest Loan Scheme,
Home and Community Care for young people (HACCPYP)

10am—1.00pm

Power Saving Bonuses and Online Application Assistance

Fridays: 2023

24th February, 24th March, 28th April, 26th May and 23rd June

28 July, 25th Aug, 22nd Sep, 27th Oct, 24th Nov, 15 Dec

For assistance please register on 9716 3361



Calendar 2023

Mondays

Tennis Coaching: Spring Valley
Reserve

Tuesdays

Quilters: 10.30am, Flowerdale Community House
Tennis Mixed Doubles: 7pm, Spring Valley
Rec. Reserve

Wednesdays

Men's Shed: open 9am-4pm, Spring Valley
Rec Reserve

**Bus Errands Depart 9:15am - from FCH to
Seymour**

Facilitated Playgroup: 10am, Flowerdale
Community House

Tennis Mixed Doubles: 7pm, Spring Valley Rec
Reserve

Music and Mindfulness: 10am-11am
Flowerdale Community House

Thursdays

Community Lunch: 10:30am-2pm,
Flowerdale Community House

Lego Club 4:30pm-5:30pm Flowerdale
Community House

Happy Hour 7pm Flowerdale Hotel

Fridays

Op Shop 10.30am-4pm Next To Hall
Reiki Book with Joan 0400 502 206
Pizza Night 4pm-8pm Hazeldene Store

Saturdays

Op Shop Open: 10.30am-4pm, Next to the Hall
Junior Tennis Development: 10am Spring Valley
Rec Reserve

Garden Workshops 11am-12:30pm Feb - June

Sundays

Op Shop Open: 10:30am-4pm, next to the Hall
Tennis Coaching: Spring Valley Rec Reserve

Monthly

- **1st Friday of the Month- CONNECT 7pm-9pm**
- **1st Sunday CFA Training & Meeting 11am**
- **3rd Sunday CFA Training**
- **1st Sunday Music 2pm Flowerdale Hotel**
- **1st & 3rd Sunday Tennis Coaching**
- **2nd Tuesday Flowerdale Womens Group meeting 3:30pm**
- **1st Saturday UFO Quilters Day 10am**
- **3rd Sunday Flowerdale Community Market 10am-2pm (Not between May-August)**

CHECK OUT THE

website

FOR MORE DETAILS

<https://www.flowerdalecommunityhouse.com.au>