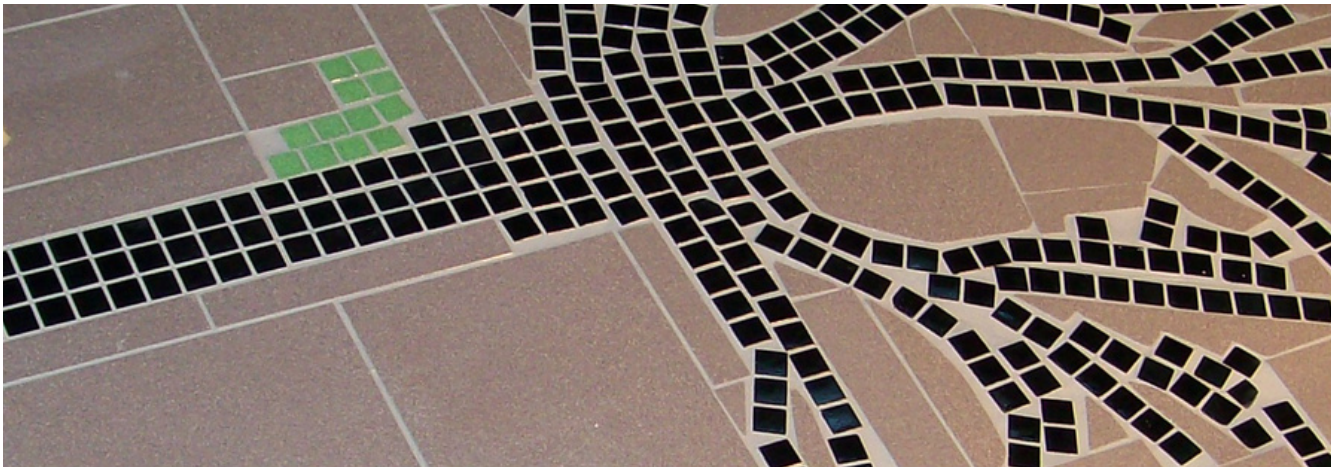


The Flowerdale Flyer



Brian and Rhonda Makin at the Flowerdale Community House Christmas Lunch bought to us by Murrindidni Foundation.





Flowerdale Community House

Building Friendships...

PO BOX: 2008 Hazeldene, 3658
36-42 Silver Creek Road Flowerdale
Phone: 5780 2664
Facebook: Flowerdale Community House
Website: flowerdalecommunityhouse.com.au
Email: fch@fchadmin.com.au

Office Hours

Tuesday - Thursday
9am-3pm

The Flowerdale Flyer is a social enterprise initiative of the Flowerdale Community House. Our staff are fully trained in both First Aid 004 and Mental Health First Aid.

If you would like your article featured in The Flowerdale Flyer, please email your article to fch@fchadmin.com.au
Articles are due on the 20th of each month

Coordinator: Rebekah Grant
fchcoordinator@fchadmin.com.au

Advertising Rates

Community group/ Not-for-profit Organisation Local (Glenburn/ Strath Creek/ Flowerdale Area) rates:

1/2 page: Free

In addition 1/2 page: \$30 increments
full page: \$50

Commercial Rates:

Full Page: \$100

1/2 Page: \$50

1/4: \$30

1/8 (business card): \$15

Not-for-profit organisation from non-local area: negotiable, contact Rebekah.

Guidelines

- All articles are subject to publisher and committee approval.
- Please submit in a Word document.
- Advertisement payment must be in process.
- Articles published are neither in favour or not in favour of politics
- All articles must be submitted by deadline.



Rainfall in Broome Road

June to November 2021	586 mm
YTD	
to 30th November 2021	812 mm
to 30th November 2020	846 mm
Total 2020	872 mm

The Community Bus will be heading to Seymour every Wednesday leaving the house at 9am. Local pick up available. If you would like a lift please call and book your seat on 58702664.

NO ONE'S UNSINKABLE

To all those Unsinkable Guys out there –

You might think it's safe to have a few drinks around water, skip the lifejacket when you're out on the boat or go for a swim without checking the conditions.

But statistics prove that 4 out of 5 drownings are men.

Just remember that no one's unsinkable.

Q UNSINKABLE GUY

**RETHINK
TAKING RISKS
AROUND
WATER**



COMMUNITY GARDEN

If you haven't already heard, we are in the process of creating a community garden at the Community House. This garden will bring many added benefits to the community including fresh fruit and veggies, opportunities to connect with others - especially during potential lockdowns, learning opportunities through workshops and experience, and much more! The works will commence as soon as funding has been approved and we encourage all ages to come down and get involved.



Late last year we put a call out for donations toward our upcoming community garden project. We were delighted by the amazing donation from Bunnings Mernda of 3 wheelbarrows, 20kg of cement, 10 buckets, and 5 watering cans! We are very grateful and look forward to commencing this project with the support of our local community this year. Please get involved in whatever way you'd like

We'd also like to thank Kinglake Rotary for their generous donation of \$500 towards this project. This would not have been possible without the amazing community spirit of Jill Viszec, Don Love, William Michell, Jackie Hare and Fiona Henson, Mirriam Bakeer, and Emma Brett who gave their time to volunteer at the November and February Kinglake markets.



GARDEN Workshops 2022



Join us to learn all about the how to get the best from your garden this year!

2 Saturdays a month from March to August 2022.

\$5 Per session

11am-12.30pm

- Composting
- Soil Preparation
- Crop Rotation and
- Companion Planting
- Weed Identification and Management
- Pest Management
- Rose and Fruit Prunning and Managment
- Mulching, Propagation, andmuch more.

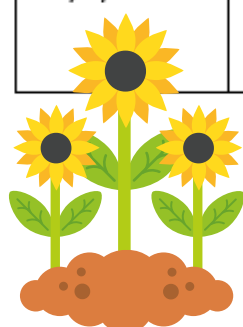
To book or for more information call 57802664 or email Rebekah on coordinator@fchadmin.com.au

Flowerdale Community House 36-42 Silver Creek Rd Flowerdale



Garden Workshop calendar

DATE SATURDAYS	TIME	SUBJECT MATTER	Hands on/ Theory/ Demonstration
12/3/22	11am- 12.30 pm	Composting	Hands on and Theory
26/3/22	11am- 12.30 pm	Soil preparation	Hands on and theory
23/4/22	11am- 12.30 pm	Crop Rotation and Companion Planting	Theory
30/4/22	11am- 12.30 pm	Planting	Theory
21/5/22	11am- 12.30 pm	Weed Identification and Management	Hands on and Theory
28/5/22	11am- 12.30 pm	Pest Identification and Management	Theory
11/6/22	11am- 12.30 pm	Rose Pruning and Maintenance	Demonstration
25/6/22	11am- 12.30 pm	Fruit Tree Pruning and Maintenance	Demonstration
2/7/22	11am- 12.30 pm	Mulching	Hands on
16/7/22	11am- 12.30 pm	Propagation- taking cuttings and striking etc.	Hands on
13/8/21	11am- 12.30 pm	Watering your plants	Theory
27/8/21	11am- 12.30 pm	Preparing your Garden for Summer	Theory



RATES REMINDER

Ratepayers who elected to pay their rates in full are reminded that payment is due by
15 February 2022.

Ratepayers paying by instalment are reminded that the 3rd instalment is due by
28 February 2022.

For those who may be facing financial difficulties in paying their rates, please get in touch with Council at an early stage as we can explore options to help you meet your rate payment commitments.

For further information, including payment options, visit our website at murrindindi.vic.gov.au or give us a call on 5772 0333.





Sunday, 3 April 2022
9am-2pm
Coronation Park, Healesville

BACK TO NATURE, BACK TO BASICS!

Enjoy open access to Healesville Community Garden

A guided park and river walk

Stalls

Family story time

Dancercise (Music + Movement = FUN!)

Location: 105 River Street, Healesville. (Enter the park from River Street or the car park by the corner of River Street and Green Street.)

Cheers,

The team at Healesville Community Garden

LOCAL GROUPS



Flowerdale Quilters and Crafters



The Flowerdale Quilters and Crafters have continued to meet whenever permitted during this difficult year. As some of our members live in metropolitan Melbourne it has been especially difficult. Despite the problems, some beautiful quilts have been produced, and these will be displayed at our Quilt Show in October. We would like to have held our quilt show last October, but deferred it to the last weekend in October 2022. Planning is underway, and we hope it will be as successful as the last one, where we were able to donate \$3000 to our Flowerdale CFA. All money raised at the Quilt Show will again be donated to the CFA. Although we are primarily quilters, we do other crafts as well, embroidery, crochet, and knitting, and we welcome anyone who would like to join us. We meet at the Flowerdale Community House every Tuesday from 10am to 2pm. and the first Saturday of the month from 10am to 3pm. The cost is \$5 per session. If interested please phone Liz 0400 782 665.

Fantastic Community Support for Flowerdale Tennis

Like all community organisations, Flowerdale Tennis Club has had difficulty raising funds for essential services over 2 years of COVID disruption and lockdowns. Income from membership fees was dramatically reduced. Crowds could not be attracted to big fundraising events. But courts and facilities need to be maintained in good condition for the future.

Flowerdale Hotel has always been a big supporter of the Club and this year they set out to ease the problem by donating to and coordinating a raffle for a full Christmas Dinner hamper. The lucky winning ticket was drawn on the 16th of December in time for the winner to plan a delicious meal for Christmas.

Thank you everyone and congratulations to Leni from Kinglake. Looking forward to 2022. For general Club information visit



<https://play.tennis.com.au/flowerdaletennisclub>

Flowerdale Tennis honours Coach Colin

The Flowerdale Recreation Reserve and the Tennis Club's courts escaped the widespread destruction of the Black Saturday fires of 2009 and became a community focus for recovery, social interaction, and recreation. Recovery was aided by community spirited volunteers from all over Victoria and beyond. Tennis coach Colin Grace from Yarrawonga, came to see if he could help. Help he did! Colin stayed to support the Club for more than a decade, driving down weekly during school terms to provide coaching and equipment services to players of all ages and levels at almost no cost. He introduced many new players to the health and fun of tennis and coached some of the Club's teams to winning success in regional competitions. Colin has now retired from coaching and the Club has recognised his fantastic contributions by naming a court in his honour at a small ceremony.



Colin (in centre in cap) and some members of the Flowerdale Tennis Club mark the occasion by fixing a plaque to the fence.



Coaching services at Flowerdale are now provided by Keith Turner. Mobile 0427 522 132 or email turnerstennistraining@hotmail.com. For general Club information visit

<https://play.tennis.com.au/flowerdaletennisclub>

Weekly Fun Challenges

Suit 5-12 years

**Thursdays
4.30 pm - 5.30 pm**

\$4 per child snack included.

A parent or guardian must stay with children.

**Bookings Essential Call
5780 2664 for bookings
and more information.**

A welcoming environment for all parents and children ages 0-5

Facilitated Playgroup

Facilitated weekly by Jill who is our experienced Montessori Early Years Educator.

LEARN **PLAY** **SMILE**

FREE

Wednesdays 10am - 11.30am
Morning Tea provided.

Flowerdale Community House
36-42 Silver Creek Rd Flowerdale

Call 57802664 for enquiries.

FRRR
Flowerdale Recreation Reserve & Regional Reserve

Made with PosterMyWall.com



The Flowerdale Sports Club Inc

ABN 90 856 039 652


Postal Address: PO Box 2004, HAZELDENE, 3658

Email: flowerdale@msn.com.au

The Spring Valley Recreation Reserve, located at 748 Spring Valley Rd Flowerdale, is a great recreational facility with tennis courts, cricket ground / community oval, playground, picnic tables, BBQ, bowls rink, public toilet and clubrooms for organised events.

The Men's shed and community garden are located at the East side of the Reserve

The Sports Club manages the grounds while activities are managed by individual Clubs

Covid19 Update	COVID Safe restrictions are determined by the Victorian Government, they may change at short notice but must be strictly adhered to.
Flowerdale Sports Club	The Sports Club, consisting entirely of volunteers, manages, and maintains the clubrooms, playground, community oval, BBQ and public toilet. Public areas and the oval are maintained with the assistance of the Murrindindi Shire.
Flowerdale Tennis Club 	New members of all levels of experience are always welcome <ul style="list-style-type: none"> • Coach Keith Turner teaches all ages and is in Flowerdale on Sunday AM and Monday PM. If interested, contact Keith on 0427 522 132. • Evening Mixed Doubles Competition: fun for all levels of play all. All matches are played in Flowerdale on Tues and Wed evenings. • District Competitions: Junior matches are on Saturday mornings while Adults matches are played on Saturday afternoons. • Social Hit: court key is available for Club members with unlimited access if courts are not in use for Club activities. • Court Rental via Flowerdale Hotel: \$10 key deposit & \$15 per half day For more Information, email flowerdaletennis@bigpond.com or contact: <ul style="list-style-type: none"> • Club President: Viv Phelan 0427 015 888 • Competitions Coordinator: Jeannette Kamar 0428 330 744
Cricket	The cricket club is currently not active but keen to re-establish activities. If you are interested, please post on the Flowerdale Sports Club FB page or email flowerdalesportsclub@gmail.com
Bowls	Bowls equipment and facilities are available for Community use. Email flowerdalesportsclub@gmail.com for further information or if you would like to start up a regular bowls group.
Men Shed and Community Garden	For information please contact: <ul style="list-style-type: none"> • Men's Shed: Don Todd 0407 793 970 • Community Garden: Don Love 0427 801 060

Flowerdale Op Shop

We have had a few of our amazing volunteers move away and/or retire after many years volunteering for us at the Op Shop.

This is why we really need more volunteers at the moment to help out. If you can offer one day a week/month please let me know.

If you are interesting in lending a hand sorting stock out the back, we would love to hear from you! You don't need any money handling or customer service skills - just bring along a can-do attitude! If you have a knack for customer service, there are also roles available on the shop floor for those wishing to volunteer regularly.

Please call Joan on 5780 1232



Thursday Lunch Group

Meet some new friends, have a cuppa and chat over a delicious lunch each week at Flowerdale Community House

Lunch is only \$3

Meet for Max's coffee at 10:30am

Dog Obedience Classes
With Jan Newton

Saturday mornings 9:30 – 10:30
At the **Flowerdale Community House**
Only \$8 per session

You and your dog will learn **basic obedience**, **socialize with other dogs** and gain a chance to **advance into agility or herding** classes in the future.

Dogs must be at least 9 months old and be vaccinated with certificate to join

BYO lead, collar, doggy bags and treats (recommend bum bag to carry treats)

MUSIC, BODY AND MIND

JOIN US ON WEDNESDAY MORNINGS AT 9.30AM
FLOWERDALE COMMUNITY HOUSE

GUIDED RELAXATION, BODYWORK, MUSICAL REFLECTION
WITH BETHIE WILLIAMS RMT NMT
SUPPORTED BY BE WELL IN THE RANGES

FOR FURTHER INFORMATION CALL
0429390038

Try something new this year!



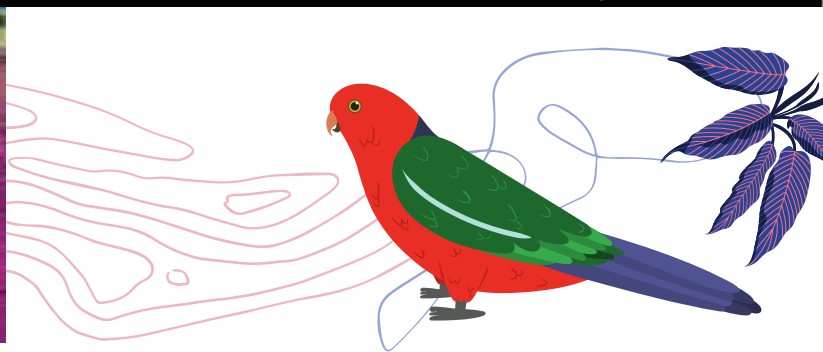
A single ember can spread bushfires as far as 30km.

Burning embers from bushfires can travel up to 30km, starting new fires in seconds, destroying homes and making escape impossible. If the Fire Danger Rating is ever extreme or above, don't hesitate. Leave early.

How well do you know fire?

Plan. Act. Survive. Go to [emergency.vic.gov.au](https://www.emergency.vic.gov.au)

Authorised by the Victorian Government, 1 Treasury Place, Melbourne



Flowerdale is part of the Dindi Arts Trail!

The water tank near the Flowerdale Pub will be painted with a mural in 2022. It will be part of the Dindi Arts Trail which will include a series of murals painted on water tanks and walls throughout the Kinglake Ranges at approved sites in Toolangi, Kinglake, Kinglake West, and Flowerdale. The Foundation for Rural and Regional Renewal (FRRR) is funding this project and Flowerdale Community House was successful in a Grant application. Flowerdale residents have provided feedback that they would like images of local flora and fauna, the most popular being the King parrot and platypus swimming in the creek. There are funds for a local artist to be mentored by a professional mural artist. The support artist will learn how to prepare the tank, scale the drawing and which paints to use. Contact the Project Manager Barbara Joyce if you want to be involved dindiartstrail@kinglakeranges.com.au

GREEN GRANTS PROGRAM

Foundation Murrindindi is pleased to announce that the **Green Grants Program** is open from February 28, 2022.

Small Grants of up to \$500 are available to community organisations to deliver environmental projects or programs that have a positive impact on the local environment and/or promote environmental stewardship and sustainability.

Information about the program is available at the Foundation Murrindindi website www.foundationmurrindindi.org.au

This grant program closes on March 31, 2022.

To discuss your project or to find out more about this grant program, please contact Foundation Murrindindi Executive Officer, Robyn Hill at robyn@foundationmurrindindi.org.au or by telephone on 0488 007 688.

Our vision is to build thriving, vibrant and connected communities within the Shire of Murrindindi.



PRESS RELEASE: “FOUNDATION MURRINDINDI SUPPORTS ENVIRONMENT AND SUSTAINABILITY COMMUNITY INITIATIVES”

Foundation Murrindindi opens its Green Grant small grant round on 28th February 2022. The Green Grant program focuses on the Foundation’s impact area of environment and sustainability.

“We are launching our Green Grant program to support community organisations to deliver environmental projects or programs that have a positive impact on our local environment and promote environmental stewardship and sustainability”, said Foundation Murrindindi’s chair, Melinda Burgess.

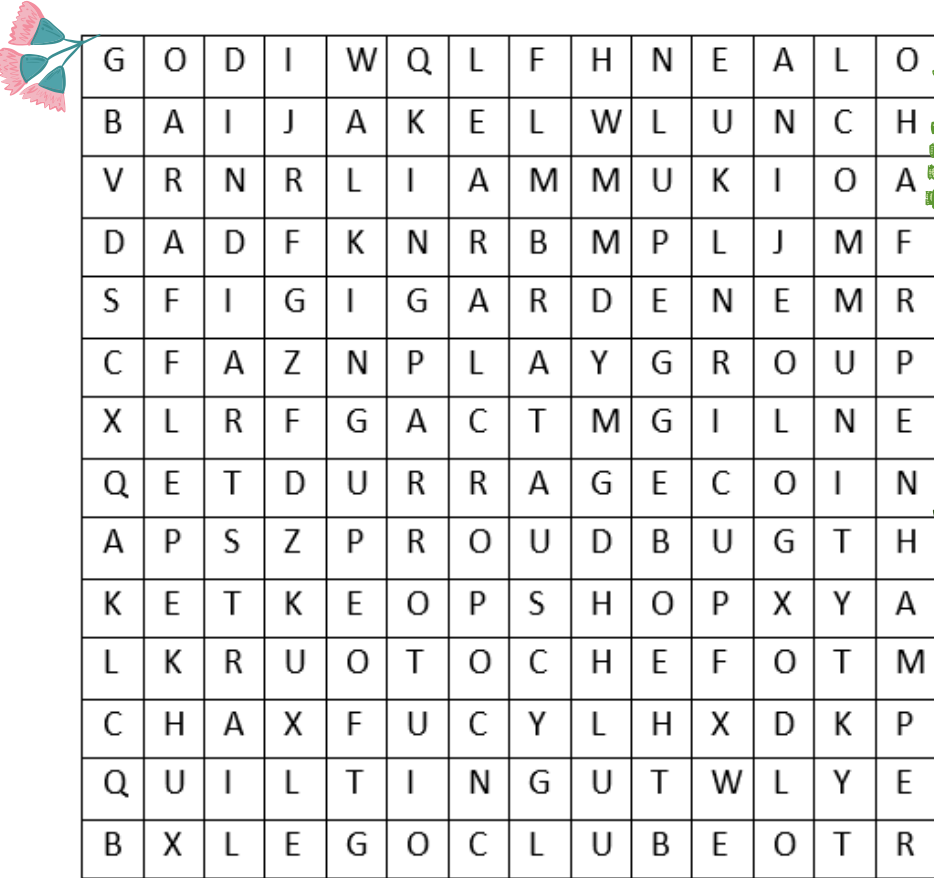
Community groups are invited to apply for small grants of up to \$500 to support community led initiatives that increase community participation in conservation and sustainability, maintain or enhance the natural environment in Murrindindi Shire or tackle climate change, waste reduction and reduce greenhouse gas emissions.

“We know community groups in Murrindindi Shire are already thinking and acting at a local level with initiatives that have a positive impact on climate,” Ms Burgess said. “Our Green Grant program aims to support these community-led initiatives”.

The Foundation Murrindindi Green Grant program is open until 31 March 2022. Information about the program is available in the grants section of the Foundation’s website www.foundationmurrindindi.org.au or contact Robyn Hill, Executive Officer on 0488 007 688 or robyn@foundationmurrindindi.org.au



Kids Corner



Did you know...

caterpillars have 12 eyes!

Colour me in!!



- | | | |
|------------------|-----------|-----------|
| CFA | GARDEN | PLAYGROUP |
| DINDI ARTS TRAIL | LEGO CLUB | QUILTING |
| KING PARROT | COMMUNITY | OP SHOP |
| LUNCH | HAMPER | RAFFLE |

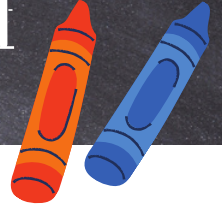
WALKING

Q1: I have a tail and a head but no body, what am I?

Q2: What gets wetter the more it dries?



Flowerdale Primary School



A little taste of our History....

Flowerdale Primary School celebrates its 132nd birthday on 14th May this year. The school has a rich and often amusing history, and in this little segment we will share some researched and anecdotal history for your reading pleasure. (Permission to use her research, granted by Julie Byrne, Author: Flowerdale Primary School A Centenary History 1891 - 1991).

The Primary School 3098, was opened on 14th May 1891. In those days Flowerdale was called Glenburne and it was considered to be a wild and remote area, with a dirt track from Melbourne to Yea (Now the Plenty Road / Whittlesea - Yea Road) and a barely recognizable track between Flowerdale and the Melba Highway (Now Break O Day Road).

A local farmer, Charles Anderson, offered one acre of his land for the school in Break O Day Road. The Education Department had almost no money, and they accepted his offer. So, thanks Charles for kicking off our history.

The school has been cited on at least 5 different locations over its life, had several names, and has burned down twice before it was 20 years old.

The first school was made of wood and tin and was about 8 x 6 metres with a small verandah. The school equipment included just 1 easel, 2 blackboards, 4 desks with seats attached, 3 forms (like a very long stool), a teacher's desk (with a locked drawer and no key), 30 slates, 5 maps, 36 copy books and 12 readers. And that, folks, is what the first teacher had to educate the children in the finer points of Reading, Writing, Maths, History and Geography - no Swimming lessons, Science, Art, Pet Education, Music or Mindfulness for our earliest students.

The first Head Teacher - indeed the only teacher - was Henry R Corkhill. Poor Henry - he only lasted a year. He wrote to the Education Department asking for a transfer and saying he "was repeatedly harassed by students and parents on his drinking habits" (Henry had attended a public meeting and the parents counted how many whiskeys he drank, told their children, and after that it was on for young and old, with Henry on the receiving end of some fairly brutal comments.)

In the first 10 years the school had 7 different Principals and was just over 10 years old when it burnt down for the first time early in 1902.

It must have been fairly rugged in those days. The second, third and fourth Principals, Harry Harms, Jessie McPhail, and Isiah Davies each lasted a year or less. The fifth Principal, Enoch Edwards, lasted two full years – an all-time record in the short life of the school.

However, the unfortunate Enoch wrote himself into the History Books, when parents reported him to the Education Department for “making the children burn a rotten horse carcass near the school”.

Enoch ruled the school between 1894 and 1896 and after that it only operated part time with the Spring Valley School until 1902. We have to assume this was because of a drop in numbers rather than the rotten horse-carcass burning incident.

(This is just a tiny snapshot of our earliest years at Flowerdale Primary School. We hope you will join us for our next adventure into the 1900s next month.)

Annie Robertson

LOOKING FOR A CAREER CHANGE?



Council's Murrindindi Family Day Care is calling on local community members, parents and people from neighbouring Shires to consider becoming a Family Day Care Educator.

We're currently seeking qualified educators to provide important services to families across the Shire. If you're passionate about working with children and want to play an important role in their development, we want to hear from you!

There are a range of benefits in becoming an educator, including being your own boss, the ability to look after your own child while looking after other children, flexible work days and hours, 24/7 support from Council, and opportunities for career development and training. An incentive package is on offer for anyone wanting to start their career as an educator. Up to \$2,500 is available to assist with the purchase of resources like printers, stationery, toys, insurance, and first aid training.

Ideally, you'll have experience in childhood education and hold a Certificate III in Children's Services (or be enrolled and studying an approved course) or if you're willing to study, we can get you started, subject to various safety checks.

Applications are being accepted on an on-going basis. For more information, visit murrindindi.vic.gov.au/jobs or give Council's Family Day Care Coordinator a call on 5772 0333.

Flowedale Primary School Report



Welcome back to our first monthly Flowerdale Primary School report for 2022.

The year has started with the return of our smiling children, and we are now in full swing. Potato Olympics, Rural Engineers, Kayaking, Sport and Swimming - just ask the children. No shortage of great learning opportunities at Flowerdale Primary School.

It has been wonderful to welcome our nine Preppies and their families to the School. Elliott, Brody, Finn, Zaine, Flynn, Sofi, Malakye, Cooper and Riki (on holidays at the moment) are totally gorgeous and full of beans. Our new arrivals are starting to settle into the long school-day routine, and by days end they are very tired little humans. Our lovely Miss Shelley Davis is their teacher, ably assisted by Mandy Darby.

Our seniors have made a brilliant start to 2022 and are working so well under the calm guidance of teachers Mrs Bree Zala and Mrs Brooke McDonald, with the help of support staff Erin and Annie. Their first off campus activity for 2022 is the annual Kayaking day at Lilydale Lake - always cause for great expectations and excitement.



We welcome back Terry Redding who is our Wednesday sport teacher and is taking the children through the basics of athletics and team sports. The children love Wednesday sport and Terry has certainly endeared himself to all of them. Making our lives even more fun, Mrs Barb Alkemade joins us again this term. And James Loney (Mr L) will also be in each week.

Mrs Sandra Horwood, our Principal, is recovering from a serious injury sustained last year, and Mr David Jovanovski has once again stepped in to lead our school in her absence.

The children were so excited to have Dave back with us and before he had a chance to get into his office, they had him down on the basketball court. Welcome back Dave. We send all our love to Sandra for a full recovery.

March 2022 features all things aqua, with the annual Water Fun Day at Healesville first on the agenda, followed by twice weekly swimming lessons for the month. The Water Fun Day provides a smorgasbord of creative water games with the emphasis on fun and laughter, while formal swimming lessons build swimming and water safety skills and we always look forward to seeing the children's confidence grow. There will be lots of pictures in the next edition of the Flyer.

We say thanks to our parents and families who have already stepped up to help us with Classroom Activities, Working Bees, Rotary Dinners and School Council. Without their strong support our governance and fundraising efforts would be compromised. Thank you all from the bottom of our hearts.

We wish you all a fantastic March and start to Autumn.



Put your recycling in the bin loose, not in bags

Items in plastic bags don't get recycled because they can't be sorted.

Recycling Victoria: Building a circular economy



Learn more at murrindindi.vic.gov.au



Council is inviting you to complete a short survey on the impacts of climate change, including the barriers and challenges to taking action. We're also asking you to share your ideas on the actions Council should be taking to address climate change and how we can support the community to take action as well.

Your feedback will help Council develop a Climate Action Plan, which will act as a roadmap for the coming years to help keep our Shire safe and prosperous in a harsher climate and support the community to meet our Shire-wide target of net zero emissions by 2035.

To complete the survey, visit The Loop at theloop.murrindindi.vic.gov.au/climateaction

You can also attend one of our pop-up events at the following locations to learn more about the project and complete the survey in person.

Alexandra Foodworks

Saturday 19 March, 9.30 am to 12 noon
102 Grant Street, Alexandra

Kinglake Market

Sunday 27 March, 10.00 am to 12.30 pm
436 Whittlesea-Kinglake Road, Kinglake

If you don't have internet access, but would like to complete the survey, give Council a call on 5772 0333 or drop in at one of our Library and Customer Service Centres in Alexandra, Yea or Kinglake.

The survey closes on 28 March 2022.

CYCLE DINDI 2022



Cycle Dindi is on again along the scenic Great Victorian Rail Trail on Saturday 2nd April. Organised by the Rotary Clubs of Yea and Alexandra, with assistance from friends of the GVRT, it is a fully supported family friendly event for adults (seniors discount available) and children. A variety of distances, starting places (Yea, Alexandra, or Merton) and starting times (8am – 11am) are available. It's also Market Day in Yea so come for a browse at the market. Lunch is beside the Goulburn River – a location to relax, enjoy some food and coffee by mobile van Café Amore. The shearing shed at Nutfield is a popular place to stop for Devonshire tea and watch working dogs demonstrate their amazing sheep yarding skills and is included in the entry cost. CycleDindi22 is a major fundraiser to support Rotary youth projects. Entry forms available at Rotary website www.yearotary.org.au and follow CycleDindi22 updates on Facebook. Queries to cycledindi22@gmail.com and bookings via direct deposit or through www.trybooking.com/BVQGK. Non riders welcome at both Morning tea and lunch for a modest cost.

Cycle Dindi



over the hills and not so far away

SATURDAY 2 APRIL 2022

A charity bicycle event
along the Great
Victorian Rail Trail

Registrations open January 2022
E: cycledindi22@gmail.com

The event on the Great Victorian Rail Trail will be centred on the lovely townships of Yea and Alexandra. There will be a choice of 3 starting points, all converging on the banks of the Goulburn River at Cathkin for lunch.

This event is a fund raiser for Rotary Youth Projects

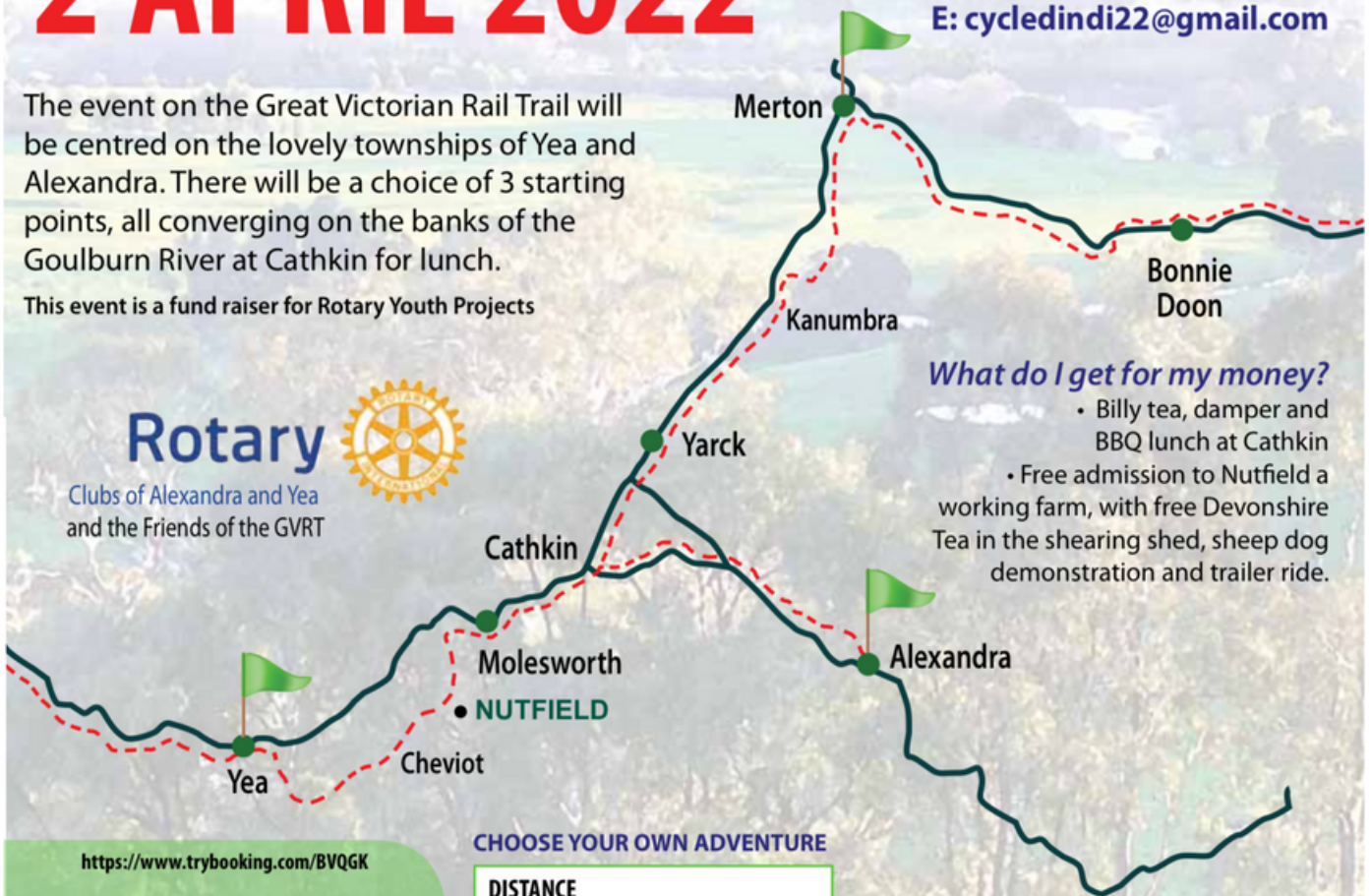
Rotary



Clubs of Alexandra and Yea
and the Friends of the GVRT

What do I get for my money?

- Billy tea, damper and BBQ lunch at Cathkin
- Free admission to Nutfield a working farm, with free Devonshire Tea in the shearing shed, sheep dog demonstration and trailer ride.



<https://www.trybooking.com/BVQ GK>

How Much?

Adult \$45
Senior \$35
Concession \$10



- Concession applies to school age children
- Under school age free
- SNR – relevant Seniors' card must be held
- Group discount available on request

CHOOSE YOUR OWN ADVENTURE

DISTANCE	
Yea to Merton (return)	93 kms
Merton to Yea (return)	93 kms
Merton to Cathkin (return)	51 kms
Yea to Cathkin (return)	42 kms
Yea to Alexandra (return)	68 kms
Alexandra to Yea (return)	68 kms
Alexandra to Cathkin (return)	26 kms

Interested?

contact Melinda (Alexandra) 0418 378 806
Julie (Yea) 0447 762 557
or Ross (Mansfield) 0439 046 199
www.rotaryalexandra.org.au
www.yearotary.org.au

Calendar 2022

Mondays

Lighten Up: 3-4pm, Flowerdale Hall

Tennis Coaching: Spring Valley Reserve

Tuesdays

Quilters: 10am, Flowerdale Community House

Tennis Mixed Doubles: 7pm, Spring Valley Rec. Reserve

Wednesdays

Men's Shed: open 9am-4pm, Spring Valley Rec Reserve

Bus Errands Depart 9:15am - from FCH to Seymour

Facilitated Playgroup: 10am, Flowerdale Community House

Tennis Mixed Doubles: 7pm, Spring Valley Rec Reserve

Music and Mindfulness: 11am-12pm Flowerdale Community House

Thursdays

Community Lunch: 10:30am-2pm, Flowerdale Community House

Art Group 2pm Flowerdale Community House

Lego Club 4:30pm-5:30pm Flowerdale Community House

Happy Hour 7pm Flowerdale Hotel

Fridays

Op Shop 10am-4pm Next To Hall

Pizza Night 4pm-8pm Hazeldene Store

Saturdays

Op Shop Open: 10am-4pm, Next to the General Store

Junior Tennis Development: 10am Spring Valley Rec Reserve

Garden Workshops 11am-12:30pm March - August

Sundays

Op Shop open: 10:30am-4pm, next to the General Store

Tennis Coaching: Spring Valley Rec Reserve

Monthly

- 1st Sunday CFA Training & Meeting 11am
- 3rd Sunday CFA Training
- 1st Sunday Music 2pm Flowerdale Hotel
- 1st & 3rd Sunday Tennis Coaching
- 2nd Tuesday Flowerdale Womens Group meeting 3:30pm
- 1st Saturday UFO Quilters Day 10am
- 3rd Sunday Flowerdale Community Market 10am-2pm (Not between May-August)

Answers to kids page

Q1: A coin

Q2: A towel

CHECK OUT THE

website

FOR MORE DETAILS

<https://www.flowerdalecommunityhouse.com.au>