

The Flowerdale Flyer

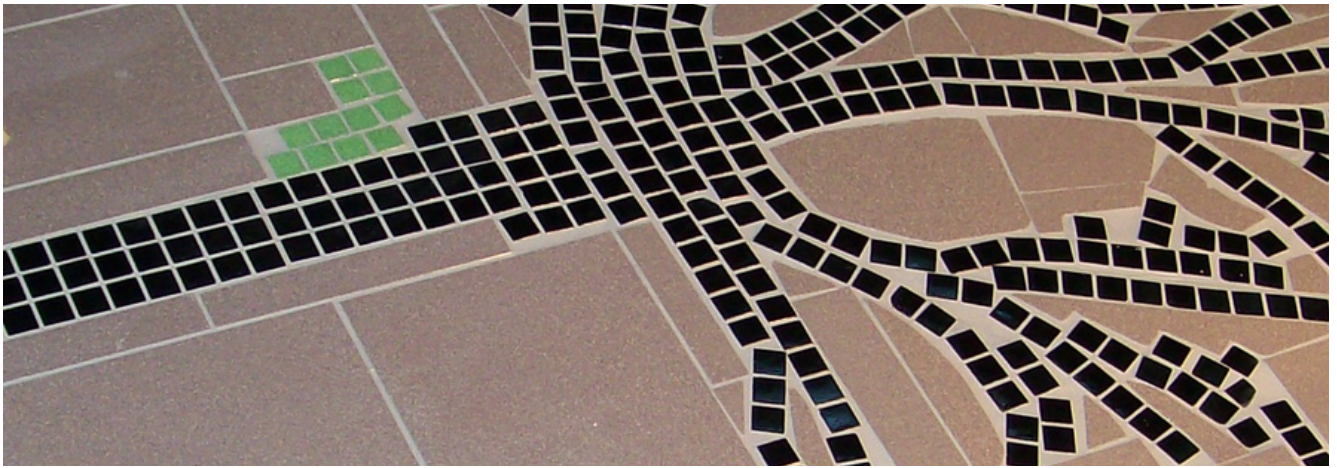


Did you know you have a Community House?

As we have many new residents and have learnt that some long term residents didn't know we existed we decided that we should make you aware of us. We run a variety of programs for all ages throughout the week but also provide a massive amount of services to the community including: onsite showers, book share, DVD share, document scanning, copying, emailing, foodbank, transport to medical appointments, we develop The Flowerdale Flyer, we support the Flowerdale Op shop and Community Garden. We create community connection and development opportunities such as Quilters and Crafters, Facilitated Playgroup, Music and Mindfulness, Lunch Group, Lego club, Yoga, Reiki, Dog Obedience, Youth Group, Garden Workshops and so much more.

We are open to the public Tuesdays, Wednesdays and Thursdays 9am -3.30 pm during school terms. If need help, want to meet locals, make new friends, volunteer or anything else come in and have a chat with Rebekah or Kelly. We are here to help. 36 Silver Creek Rd Flowerdale 3717





Flowerdale Community House

Building Friendships...

PO BOX: 2008 Hazeldene, 3658
36-42 Silver Creek Road Flowerdale
Phone: 5780 2664
Facebook: Flowerdale Community House
Website: flowerdalecommunityhouse.com.au
Email: admin@fchadmin.com.au

Office Hours

Tuesday - Thursday
9am-3.30pm

The Flowerdale Flyer is a social enterprise initiative of the Flowerdale Community House.

Our staff are fully trained in both First Aid 004 and Mental Health First Aid.

If you would like your article featured in The Flowerdale Flyer, please email your article to admin@fchadmin.com.au

Articles are due on the 20th of each month

Coordinator: Rebekah Grant
coordinator@fchadmin.com.au

Advertising Rates

Community group/ Not-for-profit Organisation Local (Glenburn/ Strath Creek/ Flowerdale Area) rates:

1/2 page: Free

In addition 1/2 page: \$30 increments
full page: \$50

Commercial Rates:

Full Page: \$100

1/2 Page: \$50

1/4: \$30

1/8 (business card): \$15

Not-for-profit organisation from non-local area: negotiable, contact Rebekah.

Guidelines

- All articles are subject to publisher and committee approval.
- Please submit in a Word document.
- Advertisement payment must be in process.
- Articles published are neither in favour or not in favour of politics
- All articles must be submitted by deadline.

COORDINATOR'S

Column

With the recent fires we are aware that our community has been affected emotionally and some financially.

We share a program called **Be Well in the Ranges** with Kinglake Neighbourhood House.. These are amazing people who provide telephone, and in person counselling sessions from a range of perspectives. The best part is they are **FREE and NO WAITING**. They are able to meet you at Flowerdale Community House or Kinglake Neighbourhood House if you prefer. We have also been informed that there are **Emergency payments available** to those who have been affected by the fires. Vic Emergency on **1800226226** or contact Murrindindi Shire.

On another note we have engaged a group to do the BMX Feasibly Study for Flowerdale and Kinglake West locations. We have put out the call for interested locals to be involved and have been pleased with the feedback. If you would like to be part of this sub committee please contact us via email coordinator@fchadmin.com.au or phone 57802664.

We ran an RSA Course at the house in February which was very well received. We also have a **Food Handlers course on the 10th of March** which needs 5 more people to run. If you are interested please ring The Centre and check out the details on page 14.

BE WELL IN THE RANGES
WELLBEING SUPPORT FOR KINGLAKE RANGES
COMMUNITIES AND SURROUNDING AREAS
FREE & CONFIDENTIAL | NO REFERRAL NECESSARY

Be Well in The Ranges

To make a booking from January 9 2023 visit our website:
<https://kinglakeranges.com.au/be-well-in-the-ranges/>
For more information call The House on: 5786 1301 or 0482 847 764

VICTORIA
State Government

24/7 MENTAL HEALTH SERVICES

Beyond Blue 1300 22 4636 beyondblue.org.au	Suicide Call Back Service 1300 659 467 suicidecallbackservice.org.au	Open Arms 1800 011 046 openarms.gov.au	Lifeline 13 11 14 lifeline.org.au	Mensline Australia 1300 789 978 mensline.org.au	Kids Helpline 1800 55 1800 kidshelpline.com.au	Yarning SafeNStrong 1800 959 563 vahs.org.au/yarning-safenstrong/
--	--	--	---	---	--	--



Garden Workshop Excursion

**Come with us to Latrobe Uni
Nangak Tamboree Wildlife
Sanctuary Indigenous Nursery.**

Kathleen will be our tour guide to see the best bits! Purchase tube stock while your there

When: 13th May 23

**Time: Bus leaving house at
10am- Returning approx 3pm**

Cost: \$7 per person.

If you want to drive yourself the address is La Trobe Ave,
Bundoora VIC 3083

**10 spots available
on bus call
57802664 to book.**





Flowerdale Community House

Yoga with Kerry Wailes



- Enjoy life more!
- Create ease in your body, mind and emotions
 - Become more mindful and present
 - Ease stress and related 'dis-ease'

Term 1 begins February 1&2, 2023
 Wednesday evening 7pm-8.30pm
 Thursday morning 10am- 11.30am
 \$180/\$160 Conc. over 10 week term
 Casual \$25/\$18 Conc.

Flowerdale Community House
 36-42 Silver Creek Rd Flowerdale

Check the website for details: <https://www.kerrywailes.com.au>

Book with Kerry

Email: kerry@kerrywailes.com.au

Mob: 0438 777 732

Made with PosterMyWall.com

REIKI HEALING Sessions

WITH

Joan Dias

EVERY FRIDAY- 9.30am-3.30pm
By Appointment Only.

\$30 for 45 minute session

Joan is highly trained in Reiki and a new modality called Pellowah.

BOOK at 0400 502 206

36-42 Silver Creek Rd Flowerdale

Made with PosterMyWall.com



Flowerdale Community House invites you to

CONNECT

1st Friday Night of the Month 6-8 pm

Connect is a monthly discussion/social and support group for adults 18+ who identify as LGBTIQ+.

36-42 Silver Creek Rd Flowerdale.

TREATY POP-UP STALL

WHERE: Flowerdale Community House
36-42 Silver Creek Road, Flowerdale

WHEN: Wednesday 8th March, 2023

TIME: 10:30am to 2:30pm

Come and have a yarn about Treaty
Mob can also enrol with us and
pick up some deadly merch!

For any questions, please email:
RebeccaW@firspeoplesvic.org.au



FIRST PEOPLES'
ASSEMBLY OF
VICTORIA



Please Note! NEW DATE for Treaty
Pop Up 8th March 10.30am-
2.30pm @ Flowerdale Community
House



From Amcal Whittlesea

0357802664

Prescription Collection Service

We want to make sure you have access to your medications on time, without issues of withdrawal or other health complications.

That's why we are offering a FREE collection service for our Flowerdale community.

To book or find out more please call us. Pick ups are available Tuesday-Thursday from Amcal Whittlesea and participants need to be able to pay for their own medications.

Dont
Run
Out

CALL NOW



COMMUNITY GARDEN



We have made some great headway in the garden since starting back at the house for 2023. We can now access water in the garden.

Working bee dates and schedules have been organised.

If you can help out on any of the dates please come down for an hour or the day. We would love to have your help and food will be provided for all volunteers.

We also will be at Yea Railway Market on the **4th of March** so pop in and buy a sausage!!



Working Bee

Dates: 26th February
12th March
26th March
16th April
30th April

10am to 3.30pm



Can you help out? Come for as long as you can on the day. Lunch provided for all volunteers.

Flowerdale Community House 36 Silver Creek Rd Flowerdale 3717



Helen Haines MP

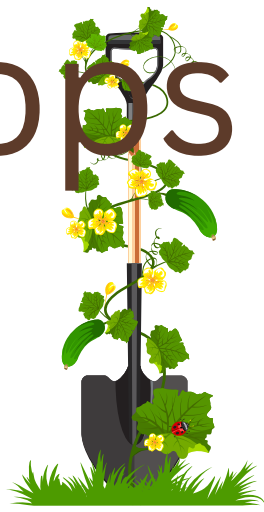


FRRR
Foundation for Rural Regional Renewal



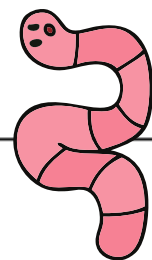
Garden Workshops

in 2023



Each session will cost \$7 per session

DATE	TIME	SUBJECT MATTER	Hands on/ Theory/Demonstration
4/2/23	11am-12.30 pm	Weed Id and Management	Theory
18/2/23	11am-12.30 pm	Pest Id and management	Theory
4/3/23	11am-12.30 pm	How to be greener in the garden (theory)	Theory
18/3/23	11am-12.30 pm	Plants and their effect on Humans and Animals	Theory
1/4/23	11am-12.30 pm	Seed harvesting, storage and sowing	Hands on and Theory
1/4/23	11am-12.30 pm	Pruning	Theory
6/5/23	11am-12.30 pm	Crop Rotation and Companion Planning	Hands on and Theory
20/5/23	11am-12.30 pm	Fruit Tree Pruning and Care	Theory/ Demonstration
3/6/23	11am-12.30 pm	Native Gardens	Theory
17/6/23	11am-12.30 pm	Planting for Wildlife	Theory



YOUTH GROUP APRIL 2023



Paint Ball Wallan 10+

When: 12th April

Cost: \$30

Meeting at house 9.30am

Please bring Hats. Drink bottle, lunch money snacks.

36-42 Silver Creek Road Flowerdale

Call to book 0493637096 or 5780
2664



Movies 10+

When: 13th April

Where: Epping

Cost : \$15 plus lunch. Bring a water bottle

Please bring Hats. Drink bottle, lunch money snacks.

Meeting at Flowerdale Community House
9.30am

36-42 Silver Creek Road, Flowerdale

Call to book 0493637096 or 5780
2664



Volo Park 12+

When : 14th April

Where: Campbellfield

Cost : 20 per person \$5 for scooter hire if needed

Bring your helmet

Please bring Hats. Drink bottle, lunch money snacks.

Meeting at Flowerdale Community House
9.30am

36-42 Silver Creek Road, Flowerdale

Limited Places Available

Call to book 0493637096 or 5780
2664



Watermarc 10+

When: 17th April

Where: Greensborough

Cost: \$15 plus lunch money

Please bring hats. drink bottle, lunch money snacks.

Meeting at Flowerdale Community House
9.30am

36-42 Silver Creek Road, Flowerdale

Call to book 0493637096 or 5780
2664

YOUTH GROUP APRIL 2023

Bounce and Park

10+



When : 18th April

Where: Heidelberg

Cost: 22per person plus lunch

Meeting at Flowerdale Community House 9.30am

Please bring Hats. Drink bottle, lunch money snacks.

36-42 Silver Creek Road, Flowerdale

Limited Places Available

Call to book 0493637096 or 5780 2664

Did you know
your household
could be eligible for

\$ **250**
off your power bills?

**NEW
ROUND
MARCH**



Funded by:



Hello again. Last month we had a quick overview of the Carer Gateway and listed the supports that are available to you as a carer. This month I would like to focus on Carer Support & Planning - a very important part to assisting carers to access the supports they need. All too often carers put their own needs secondary to those of the person they care for. It is important that you as a carer prioritise your needs which in turn supports to continue in your caring role. The Carer Gateway has the needs of the carer as the main priority - all assistance that is provided through the Carer Gateway has the carer firmly at the heart of that support.

Carer Support & Planning is a process that has two main stages:

1. Understanding the carers needs
2. Support Planning

Through a guided conversation our carer support and planning staff work with each carer to understand their individual priorities. This conversation focuses on several key areas including: the carers health; the caring role; managing at home; how you are feeling; and how the caring role is impacting on your work / study / volunteering / social activities.

Once a carers priorities have been identified our carer support and planning team provide short term support to carers to help them navigate, coordinate and access the right services.

Support is tailored to your needs – we can help you connect with services that support both your needs and well-being.

We will keep in touch regularly and work with you to ensure your needs are being met, the support is sustainable and to check in on your well-being.

For more information regarding the supports available to you as a carer Contact the Carer Gateway at www.carergateway.gov.au or by phone on 1800 422 737.

Kind Regards

Jason

Flowerdale Landcare News.

Flowerdale Landcare committee met on Saturday 25th of February to discuss activities for the coming 12 months. It was resolved that the focus of the group would be;

Assistance in fence clean up and restoration, for people impacted by the Spring Valley Road Grass Fire.

A number of members of our Landcare Group have been impacted. Five households in Spring Valley Road are members and one of our members was first to the ignition point but was unable to do more than assist neighbours in the path of the fire.

Flowerdale Landcare invites people in the fire zone to make contact when ready. You do not need to be members of any Landcare Group. We can offer volunteers to pull down and remove destroyed fencing and we can assist with running out wires and putting steel droppers in.

Please contact flowerdalelandcare@iinet.net.au or **Steve and Heather Joblin on 0412 334 521 or 0419 351 939** if you would like fencing assistance or if you would like to work as a volunteer on this effort.

One activity we normally undertake is Clean Up Australia Day. We decided that helping impacted landholders to Clean Up will be the focus of our energy this year.

We are also continuing with other Landcare activities as the next round of Fox management has started and a number of property owners have already put their hands up for inclusion in the program.

Lastly, we are planning to take part in the next Platypus survey to coordinate with Strath Creek Landcare who have decided to hold theirs on 18th March from 6pm. We held off doing one last year or early this year due to the flooding in the King Parrot Creek, but we would now like to complete a survey to compare with last years records numbers of Platypus that were spotted in the creek. Can anyone who would like to assist with this year's survey please contact Ken on kenmi@bigpond.com or 0408 060 045 or the landcare email.



AN AUTHOR IN SEARCH OF INFORMATION

MY NAME IS LOUIS NOWRA, I AM A PLAYWRIGHT, NOVELIST, SCREENWRITER AND NONFICTION AUTHOR WHOSE LATEST BOOK IS SYDNEY: A BIOGRAPHY. MY MEMOIR THE TWELFTH OF NEVER INCLUDES A SECTION ON FLOWERDALE, THE SOURCE OF MANY HAPPY HOLIDAYS WHEN I WAS YOUNG. THE REASON FOR THIS WAS THAT MY MOTHER WAS BORN IN THE FLOWERDALE AREA, AS WERE HER SIBLINGS. MY GRANDMOTHER'S PARENTS WERE THE COLLINS FAMILY WHO OWED THE FLOWERDALE HOTEL DURING THE 1920S.

MY GRANDFATHER, ROBERT FRANCIS HERBERT, WITH HIS FAMILY, CAME TO LIVE IN THE AREA AROUND 1910 AND LIKE MANY YOUNG MEN IN FLOWERDALE AND STRATH CREEK SIGNED UP TO FIGHT DURING WORLD WAR ONE. HE FOUGHT IN GALLIPOLI AND WENT ON TO THE NIGHTMARE OF WESTERN FRANCE. HE RETURNED TO STRATH CREEK IN 1919 WHERE HE WAS GIVEN SOLDIER SETTLEMENT LAND AND MARRIED MYRTLE COLLINS IN 1921. THEY STAYED IN THE AREA BEFORE SHIFTING TO BROADFORD IN 1929. I AM WRITING A BIOGRAPHY OF MY GRANDFATHER AND IT WILL INCLUDE A DETAILED HISTORY OF STRATH CREEK AND FLOWERDALE FROM THE LATE NINETEENTH CENTURY UNTIL 1930. I HAVE ALREADY DONE EXTENSIVE RESEARCH BUT I'M NOW AFTER ANY INFORMATION TO FURTHER ADD TO MY BOOK.

SO, I AM AFTER DESCENDANTS AND FAMILY HISTORIANS WHO MAY BE ABLE TO HELP ME WITH THE FOLLOWING FAMILIES AND HISTORY OF THE AREA BETWEEN 1900 AND 1930:

THE COLLINS FAMILY. BYRNE FAMILY. BRACE FAMILY (MY GRANDFATHER'S BEST FRIEND, SAM BRACE WAS KILLED AT GALLIPOLI) THE HERBERT FAMILY, THE LADES AND THE HILLIARS. PLUS FAMILIES WHO WERE PART OF POST-WORLD WAR ONE SOLDIER SETTLEMENTS IN THE AREA.

ANY HELP WOULD BE MUCH APPRECIATED.

MY EMAIL ADDRESS IS LOUISCALENOWRA@GMAIL.COM

**NEW
DATE**



Follow Workplace Hygiene

Duration: 6 hours

Cost: \$120 pp

SITXFSA001 Use hygienic practices for food safety

Food handlers get the skills and knowledge to handle and prepare food safely and hygienically.

This unit is part of SIT30616 Certificate III in Hospitality and a statement of attainment will be issued by The Centre.

Fee includes course materials.

The course includes hands-on food preparation in a simulated commercial kitchen environment.

**NEW
DATE**



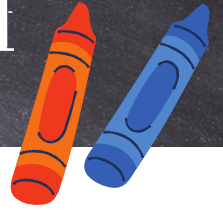
10th March - Flowerdale Community House

Call 03 5721 0200 contact@thecentre.vic.edu.au

The Centre for Continuing Education Inc.
Reg No. A0001858K | A Child Safe Organisation | TOID 4172



Flowerdale Primary School



A LITTLE TASTE OF OUR HISTORY....PART 4

(You may remember in 2022 we published 3 articles on the colourful history of our local Primary School. Much of this information comes from the research of Julie Byrne. It is with her generous permission that we continue with this our history. We hope you enjoy Part 4.)

When we leave the last chapter of the school's history, it is 1936, and the school is located at Mrs Carver's cottage at Kinlochiel in Moores Road.

The school is under the leadership of Mr Laurie Horton. Laurie is a good bloke and he toughs it out from 1936 until 1942, his leadership producing a period of relative harmony and stability....despite some rocky patches and temporary closures. Indeed Laurie takes the prize for being the longest serving principal in the School's 50 year history.

Sadly, the School's tenure at Kinlochiel lasts only until 1937. For a while the school closes for two reasons. The first is the "lack of suitable accommodation to house a school", but more importantly, infantile paralysis rears it's ugly head and causes many schools to close. Flowerdale is one of them.

In the meantime, the Department tries to reinstate the location of the school back to the Spring Valley site. However, on inspection, the site is deemed unfit as it is a complete bog in winter. So, they decide to move the building to a new site. But again, an inspection results in the building being declared unfit for removal. As it turns out, this is a good decision. There is not one straight wall, and the building leans very noticeably to one side, as if determined to end its life being swallowed by the boggy ground.

Finally, in 1938, a new school site is found... an enchanting little spot nestled in the Valley of a Thousand Hills and under the shadow of The Three Sisters. And that is where Flowerdale Primary School 3098 proudly stands today.

But back in the day, the school is primitive to say the least. It is an 18ft x 12ft construction. (That's about 5.5 meters x 4 metres in today's language.) It has been moved from the Johnson Creek School ... and it's no palace by anyone's standards. There is also a small shelter shed tacked on to the eastern side of the schoolhouse. The school population has sky-rocketed to a staggering 12 children.

Time passes. It is now 1942. Early in the year, we farewell the very popular Laurie Houghton. Everyone agrees Laurie has done a stellar job in circumstances that can hardly be called easy.

It seems 1942 is not our happiest year. Laurie's departure is followed by no less than 3 principals before the year closes, pipping the 1894 record.



Flowerdale Primary School



is hardly surprising that the rate of Principal turnover is so high. 1942's third Principal, Sylvia, asks the Education Department to provide more student seating as there are now 17 children and not enough seats for everyone. She also makes the very reasonable request that the window be repaired. Weekend campers have decided to use the windows for target practice. There are several bullet holes, resulting in a novel form of air-conditioning. Nothing is done.

In the May of this year, there is an inspection of the building. It results in a submission to the Education Department to expand the school. (At the time, the Department rule is that each child have 12sq ft of space.) Once again no action is taken.

In 1943 a Health Inspector condemns the schoolhouse. But not one word of response (and definitely no action) from the Department who seem as determined to neglect the school population as much as it does the buildings. Their silence is disheartening.

It could be the state of the schoolhouse; it could be the transient nature of many Flowerdale residents at the time; it could be that the Department takes more than 2 years to repair the badly smoking fireplace, fix the broken furniture or pop a lick of paint on the peeling walls; whatever the reason, 1942 right through to 1946 are turbulent times. Enrolments fall, rumours of school closure abound, and the future is certainly not glowing with promise.

However, Flowerdale Primary School is resilient. By 1947 enrolments have reached 20. One year later they have reached 27. Now, you may remember we are housing 27 kids in a 5.5 x 4 meter space, and seating is in very short supply.

Finally, the Department decides it is time to act. It moves the old Killingworth School to Flowerdale, with the existing

Flowerdale schoolhouse to be used as a shelter shed until it is removed. Everyone is excited to be getting a new school.

But disappointment is a frequent flyer at the school. The new addition is no shining beacon of architectural beauty....there's a hole in the wall where a chimney should be, and no chimney in sight. The windows are broken and many repairs need to be done. So, we pocket our high expectations, and the old schoolhouse, inadequate as it is, continues to be used right up to June 1950.

So, as you can see, school life in Flowerdale in the 1940s is no party for child or adult. Things can only improve.

In our next edition, we will pause to reminisce as some of our current and former residents share their recollections of their school days at Flowerdale. Many of their stories are sure to make you laugh.

Annie Robertson

How to understand the App



The advertisement features a smartphone on the left displaying a map with various hazard icons (house, fire, car, person). To the right is the VicEmergency logo, a stylized blue and red flame. Below the logo is the text 'VIC EMERGENCY' and 'Download the VicEmergency app'. Further down, it says 'Visit: emergency.vic.gov.au/prepare' and 'Or download the app from:'. There are two buttons: 'GET IT ON Google Play' and 'Available on the App Store'. At the bottom left is the SES logo and the slogan 'Safer Communities – Together'. At the bottom right is the website 'ses.vic.gov.au'.

VIC EMERGENCY

Download the VicEmergency app

Visit: emergency.vic.gov.au/prepare
Or download the app from:

GET IT ON
Google Play

Available on the
App Store

SES
Safer Communities – Together

ses.vic.gov.au



Community information alert - blue. Keep checking the app - You are not in danger. You are outside the danger area. Talk to your family about your plan, plus know your address and phone number.



Advice warning - yellow. You are not in danger, but you are close to the danger area. You have to get your things together (pack your bag, have a phone, water and food, if you can). Other people might be doing the same thing.



Watch and act warning - orange. You are close to the danger area, this is the time to leave for safety.



Emergency warning - red. You are in the danger area and you need to stay safe inside, if you cannot leave. Leave only if safe- listen to the radio and look at the map. Call 000 if you need help.



This is a special alert. Prepare to evacuate/ leave, listen to emergency information about evacuating.



Flowerdale CFA



"THANK YOU"

What an inadequate word the sometimes is.

How does one say "Thank you " to all the VOLUNTEERS, who for in excess of 6 days worked tirelessly to control this event, and they are still on the fire ground making sure there are no Hotspots or potential Flareup areas in this extensive and wide field of devastation.

To all the VOLUNTEER Fireies who came from many Brigades from across our Region and beyond, well done, and to your employers who gave you the time off to be there for us, and the farmers and self employed that also gave their time Thank you.

To my Region 12, fellow C.F.A.ers thank you for the support i received from you and especially the Local Brigade controllers who did an unbelievable job. Your training, experience and empathy for all was amazing. To Zoe and Jai (Ambos) thanks also.

The Helicopter Crews and Refuelers, boy you are amazing. Night Flying, water pick ups and drop, in normal circumstances it would be great to watch but mind blowing as to your accuracy and skill in the situation. Thank you all. Bit BLOWY when you took off.

The police, also from far and wide, thank you for your care and assistance in your management of traffic and compassion you showed to all the people, both residents of the effected area and Volunteer personal. A job well done. Once again my thanks to you all.

The Salvos, wow what a group of volunteers. Meals that you would not believe possible to be delivered to both the Fire Ground and to Staging Areas Beautiful salads, hot meals, fruit and an abundance of snacks and just about anything one would get at their home. To Caroline and her crew my admiration and gratitude to you all, the people on the fire ground, staging area and all the other Volunteers when they did get a break they wanted for nothing. Thanks seems a very inadequate word to use.

To Murrindindi Council, council nearly always gets heaps of flak, what a team, water tanks refilled (used trucks) toilets cleaned, yep that is an essential task to be done, and different Departments checking id we require anything.

Once again my thanks.

To the Flowerdale Local, thank you also for your assistance, working together makes the task easier.

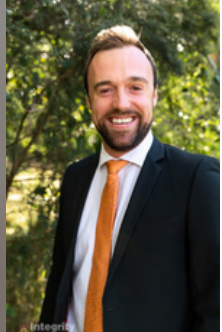
To all those effected by this fire, you are amazing, stay strong do what you always do, be there for your families, do not be afraid to ask for help if needed and rest assured we will be there for you. I do not envy you the tasks ahead, rebuilding fences, sheds and the general infrastructure of your properties. A massive job but i know you will get there.

As i said, Tthank you seems an inadequate term but as a VOLUNTEER member of the Flowerdale C.F.A. it comes from the bottom of my heart.

Trudie Goudge
Flowerdale

Integrity

info@integrityrealestate.com.au



Property Report February

Your Guess is as Good as the Media

Another day, another 25 basis point rate rise. It can be assumed it has become an expected norm by now, but everyone's asking, have we seen the end of this cycle, or is it only just the beginning? The 9 rate rises and counting have been met with mixed emotions from the public and general confusion as to what the lasting effect is going to be. It has been an incredible start to the real estate market in 2023. Research has shown on average it can take buyers 7 months to buy a property. And with the end of Winter lag from last year, a lot of buyers who were delayed in purchasing due to the lack of a Spring selling season, made the decision to buy a property in February. Seeing positive results in November and February, some may be disillusioned by what is actually happening in the marketplace. So, let's break it down. The mortgage cliff. On one hand the media is predicting a steep mortgage cliff, due to expire this year, with some mortgages going up 4-5%. With this in mind, some homeowners may be wary about their spending and focused on interest rates more than they have been in the last 2 years. This has created 2 schools of thought; can homeowners afford to keep their homes? Will there be an opportunity for buyers to get into the market at an affordable price? Interest rates. With the cash rate increasing by 25 basis points to 3.35% on the 7th February, it has left the public questioning whether this will be a sign of easing measures by the RBA, or the continuation of a series of interest rate hikes through 2023. Most brokers are working closely with their clients to factor in a number of rate rises with a higher assessment rate to ensure their budgets remain strong. This has also produced more stubborn buyers with smaller deposits. Inflation. We can't control it and yet we all cause it. We cause it when we decide to get the almond croissant as well as the coffee, instead of just the coffee. And with an inflation rate floating around 7.8% post-Christmas, the public feel as if the RBA's movements with firm policies are a slap on the wrist for spending money when we shouldn't have. But will an easing real estate market cause people to spend less on consumer goods? Or will a stable real estate market facilitate saving and a shift in consumer spending? The media has taken several approaches to create alarm and influence spending habits in the past 10 months. From predicting a recessionary market to severe mortgage stress, media articles have focused strongly on interest rates as closely as it did Covid cases. Why? Because fear driven media is popular. We were quoted in The Age this month talking about regional house prices post Covid. Dispelling fear tactics, the good news is the house price median is still up, and regional Victoria still averaged a whopping 107.8% growth over a 5 year period. We predicted the market floor to be in Autumn, and a return to normal prices sometime this year. Throughout the last 2 years we have seen success stories and experienced hardships. We have worked with clients who have benefitted from the inflated prices to those that have been affected by inflated rates. Within a 2 year period some homeowners saw incredible returns of up to 60%, to some experiencing up to a 13% decrease in value over a 2 year period. What it boils down to in the end is what is perceived as being valuable to people. Coming to the end of Q1 2023, we have seen 30% of listings sell, and the good news? 66% of those sales were either at their reserve price or within their respective price ranges. This gives us hope for a stable market through Autumn and a positive outlook for the start of the year. We're encouraging clients to work closely with their



brokers to see what they can do with their loan products. See what you can do to plan ahead and implement a budget to guard your family's finances in 2023. References:
[https://reiv.com.au/property-data/member-resources/researchbulletin/memberonly/media/n/dec-q-2022-\(full-release\).aspx?_zs=7SRJm&_zl=Hjfp2](https://reiv.com.au/property-data/member-resources/researchbulletin/memberonly/media/n/dec-q-2022-(full-release).aspx?_zs=7SRJm&_zl=Hjfp2)
https://www.domain.com.au/research/rental-report/december2022/?utm_medium=email&utm_source=domain&utm_campaign=%5B2023%2F01%2F19%5D%20Domain%20Auction%20%7C%20Market%20Wrap%20-%20December%20quarter%20-%201912023
<https://www.theguardian.com/business/2022/aug/27/underquoting-in-australian-realestate-industry-is-leaving-buyers-feeling-betrayed>

REIKI HEALING Sessions

WITH
Joan Dias

**EVERY FRIDAY- 9.30am-3.30pm
By Appointment Only.**

\$30 for 45 minute session

Joan is highly trained in Reiki and a new modality called Pellowah.

BOOK at 0400 502 206

36-42 Silver Creek Rd Flowerdale

Made with PosterMyWall.com



Flowerdale Community House invites you to

CONNECT

1st Friday Night of the Month 6-8 pm

Connect is a monthly discussion/social and support group for adults 18+ who identify as LGBTIQ+.

36-42 Silver Creek Rd Flowerdale.

CITIZEN OF THE YEAR AWARDS

Nominations for the Murrindindi Shire Citizen of the Year Awards are open from now until Sunday 2 April 2023. Council is encouraging all Shire residents to think about an individual or community group that inspires you and to consider nominating them for one of the four Award categories.

Nominations are open in the following categories:

- Murrindindi Shire Citizen of the Year
- Murrindindi Shire Senior Citizen of the Year
- Murrindindi Shire Young Citizen of the Year
- Community Group of the Year

Nominations close on Sunday 2 April 2023, and entries will be judged from 11 April, with winners of the Awards announced and presented at council-led events during National Volunteer Week (15-21 May 2023).

For more information on the Awards, eligibility criteria, Frequently Asked Questions, and to nominate an individual or community group, visit theloop.murrindindi.vic.gov.au/awards

MURRINDINDI COMMUNITY MEETING

Would you like to speak to Council about topics that affect you and your community? Council is hosting an Open Community Meeting in Murrindindi for residents to talk directly to Murrindindi Shire Councillors about issues or ideas that are important to you or your community.

Date: Wednesday 29 March 2023

Time: 5.00 – 7.00 pm

Venue: Murrindindi-Woodbourne Community Hub, 815 Murrindindi Road, Murrindindi

Email governance@murrindindi.vic.gov.au or call Council on 03 5772 0333 for more information

WHAT'S NEXT FOR GLENBURN AND THORNTON COMMUNITY PLANNING

We have two Community Planning Prioritisation Dinners planned for the Glenburn and Thornton communities. These events are where you, and other community members, will decide which priority projects are included in the Community Plans for your town.

Glenburn Prioritisation Dinner

When: Wednesday 25 March 2023 at 6.00 pm

Where: Glenburn Community Hall

Thornton-Rubicon Prioritisation Dinner

When: Wednesday 29 March at 6.00 pm

Where: Thornton Memorial Hall

To book your spot, visit theloop.murrindindi.vic.gov.au and search 'community planning', or call 5772 0333.

BLUE GUMS TO EILDON RECREATIONAL TRAIL

Construction of the Blue Gums to Eildon Recreational Trail is about half-way complete! Once we finish excavation works and establish a solid base for the trail, we'll apply a spray seal to the trail and carry out landscaping works.

We are busy completing other important elements of the project including gabion basket stone retaining walls as part of an extension of the trail to the Eildon Pondage weir, and the construction of a pit stop area at the front of the Big4 Breeze Holiday Park - Eildon (Blue Gums Caravan Park).

Thanks to Regional Development Victoria for funding of \$1.77 million to supplement Council's \$190,000 investment to deliver this exciting project.

Visit theloop.murrindindi.vic.gov.au and search 'recreational trail' to find out more.

DEMONSTRATION DAY WITH THE PHEASANT CREEK BLACKBERRY ACTION GROUP

Pheasant Creek Blackberry Action Group and the Victorian Blackberry Taskforce is inviting the community to a blackberry control workshop in Kinglake Central on Sunday 19 March.

The workshop will run from 10.00 am – 12 noon at the corner of Tooheys Road and Whittlesea-Kinglake Road, Kinglake Central.

To learn more about how to control blackberries on your property, RSVP by 12 March. Contact Chris Cobden on 0413 855 490 or ugln.projects@ugln.net. Catering supplied.

PET REGISTRATIONS

Do you own a dog or a cat? If your pet is registered with Council, you will soon receive your 2023-2024 pet registration renewal notice, with a due date of 9 April 2023.

If you have a dog or cat and they are not yet registered, you can download an animal registration form from our website at murrindindi.vic.gov.au or give us a call on 5772 0333. You can also complete an online form to change the details of a registered pet.

STAY INFORMED

To stay up to date with the latest Council news, visit murrindindi.vic.gov.au/news or follow us on Facebook.

GET IN TOUCH

customer@murrindindi.vic.gov.au

murrindindi.vic.gov.au/request

5772 0333

REGISTER TO TAKE PART IN THE KINGLAKE COMMUNITY EXERCISE

Saturday 25 March 2023

You are invited to participate in an emergency exercise in Kinglake, hosted by Emergency Management Victoria and Murrindindi Shire Council.

The purpose of the exercise is to help everyone, community and emergency services, be better prepared, and understand the complex needs and challenges that may arise, in the event of an emergency.

As part of the exercise, Council and emergency services will operate a mock relief centre.

Exercise details:

Saturday 25 March between 10.00 am – 3.00 pm

Kinglake Community Centre, 436 Whittlesea-Kinglake Road, Kinglake

Locals are invited to register to participate in the exercise and will be provided with a scripted persona (character) to act out on the day, which will reflect real challenges and opportunities for emergency services to respond to. You do not need experience or specific knowledge to be involved.

Visit murrindindi.vic.gov.au/kinglakecommunityexercise to register your interest in participating in the exercise.

You can also drop in to Council's Kinglake Library and Customer Service Centre and let our customer service team know that you'd like to register your interest.

Expressions of interest close on Sunday 12 March 2023.



Calendar 2022

Mondays

Lighten Up: 3-4pm, Flowerdale Hall

Tennis Coaching: Spring Valley Reserve

Tuesdays

Quilters: 10.30am, Flowerdale Community House

Tennis Mixed Doubles: 7pm, Spring Valley Rec Reserve

Wednesdays

Men's Shed: open 9am-4pm, Spring Valley Rec Reserve

Bus Errands Depart 9:15am - from FCH to Seymour

Facilitated Playgroup: 10am, Flowerdale Community House

Tennis Mixed Doubles: 7pm, Spring Valley Rec Reserve

Music and Mindfulness: 10am-11am Flowerdale Community House

Community Lunch: 10:30am-2pm, Flowerdale Community House

Yoga

Lego Club 4:30pm-5:30pm Flowerdale Community House

Yoga 10-11.30 am Flowerdale community House

Happy Hour 7pm Flowerdale Hotel

Fridays

Op Shop 10.30am-4pm Next To Hall

Reiki Book with Joan 0400 502 206

Pizza Night 4pm-8pm Hazeldene Store

Saturdays

Dog Obedience: 9.30-10.30am Flowerdale Community House **Will recommence in Spring**

Op Shop Open: 10.30am-4pm, Next to the Hall

Junior Tennis Development: 10am Spring Valley Rec Reserve

Garden Workshops 11am-12:30pm March - September

Sundays

Op Shop open: 10:30am-4pm, next to the Hall

Tennis Coaching: Spring Valley Rec Reserve

Monthly

- 1st Friday of the Month- CONNECT 7pm-9pm
- 1st Sunday CFA Training & Meeting 11am
- 3rd Sunday CFA Training
- 1st Sunday Music 2pm Flowerdale Hotel
- 1st & 3rd Sunday Tennis Coaching
- 2nd Tuesday Flowerdale Womens Group meeting 3:30pm
- 1st Saturday UFO Quilters Day 10am
- 3rd Sunday Flowerdale Community Market 10am-2pm (Not between May-August)

CHECK OUT THE
website

FOR MORE DETAILS

<https://www.flowerdalecommunityhouse.com.au>